



HOODS, FLOOR GRIDS & OIL RETAINERS





FLOOR GRIDS OIL RETAINERS



- Grids are removable.
- Strong profile structure which allows long lifetime.



PRF

FLOOR GRID

| MODEL | DIMENSIONS |
|---------|------------|
| | mm |
| PRF 33 | 300X300 |
| PRF 34 | 300X400 |
| PRF 35 | 300X500 |
| PRF 37 | 300X741 |
| PRF 39 | 300X941 |
| PRF 311 | 300X1184 |
| PRF 313 | 300X1384 |
| PRF 316 | 300X1626 |
| PRF 318 | 300X1826 |
| PRF 320 | 300X2068 |
| PRF 322 | 300X2268 |
| PRF 325 | 300X2510 |
| PRF 327 | 300X2710 |
| PRF 329 | 300X2952 |

| MODEL | DIMENSIONS |
|---------|------------|
| | mm |
| PRF 43 | 400X300 |
| PRF 44 | 400X400 |
| PRF 45 | 400X500 |
| PRF 47 | 400X741 |
| PRF 49 | 400X941 |
| PRF 411 | 400X1184 |
| PRF 413 | 400X1384 |
| PRF 416 | 400X1626 |
| PRF 418 | 400X1826 |
| PRF 420 | 400X2068 |
| PRF 422 | 400X2268 |
| PRF 425 | 400X2510 |
| PRF 427 | 400X2710 |
| PRF 429 | 400X2952 |

AK

FLOOR GRID / WITH COLLECTING POT / DISCHARGE FROM THE BOTTOM / NOT INCLINED

DN 70 PVC (0/75 mm)

Shallow Type

| MODEL | DIMENSIONS |
|----------|------------|
| | mm |
| AK 33 70 | 300X300 |
| AK 34 70 | 300X400 |
| AK 35 70 | 300X500 |
| AK 37 70 | 300X741 |
| AK 44 70 | 400X400 |
| AK 45 70 | 400X500 |
| AK 47 70 | 400X741 |



DN 100 PVC (1/110 mm)

| MODEL | DIMENSIONS |
|-----------|------------|
| | mm |
| AK 33 100 | 300X300 |
| AK 34 100 | 300X400 |
| AK 35 100 | 300X500 |
| AK 37 100 | 300X741 |
| AK 44 100 | 400X400 |
| AK 45 100 | 400X500 |
| AK 47 100 | 400X741 |



FLOOR GRID / WITH COLLECTING POT / DISCHARGE FROM THE BOTTOM / INCLINED TO ONE SIDE

AK

Ø 70 DN

Shallow Type

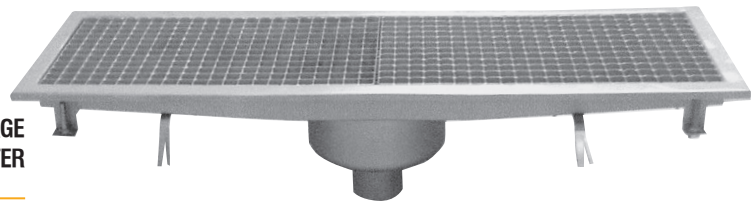
| MODEL | DIMENSIONS |
|-----------|------------|
| | mm |
| AK 39 70 | 300X941 |
| AK 311 70 | 300X1184 |
| AK 313 70 | 300X1384 |
| AK 316 70 | 300X1626 |
| AK 318 70 | 300X1826 |
| AK 320 70 | 300X2068 |

| | |
|-----------|----------|
| AK 49 70 | 400X941 |
| AK 411 70 | 400X1184 |
| AK 413 70 | 400X1384 |
| AK 416 70 | 400X1626 |
| AK 418 70 | 400X1826 |
| AK 420 70 | 400X2068 |

Ø 100 DN

| MODEL | DIMENSIONS |
|------------|------------|
| | mm |
| AK 39 100 | 300X941 |
| AK 311 100 | 300X1184 |
| AK 313 100 | 300X1384 |
| AK 316 100 | 300X1626 |
| AK 318 100 | 300X1826 |
| AK 320 100 | 300X2068 |

| | |
|------------|----------|
| AK 49 100 | 400X941 |
| AK 411 100 | 400X1184 |
| AK 413 100 | 400X1384 |
| AK 416 100 | 400X1626 |
| AK 418 100 | 400X1826 |
| AK 420 100 | 400X2068 |



FLOOR GRID / WITH COLLECTING POT / DISCHARGE FROM THE BOTTOM / INCLINED TO THE CENTER

SAK

Ø 70 DN

Shallow Type

| MODEL | DIMENSIONS |
|------------|------------|
| | mm |
| SAK 39 70 | 300X941 |
| SAK 311 70 | 300X1184 |
| SAK 313 70 | 300X1384 |
| SAK 316 70 | 300X1626 |
| SAK 318 70 | 300X1826 |
| SAK 320 70 | 300X2068 |

| | |
|------------|----------|
| SAK 49 70 | 400X941 |
| SAK 411 70 | 400X1184 |
| SAK 413 70 | 400X1384 |
| SAK 416 70 | 400X1626 |
| SAK 418 70 | 400X1826 |
| SAK 420 70 | 400X2068 |

Ø 100 DN

| MODEL | DIMENSIONS |
|-------------|------------|
| | mm |
| SAK 39 100 | 300X941 |
| SAK 311 100 | 300X1184 |
| SAK 313 100 | 300X1384 |
| SAK 316 100 | 300X1626 |
| SAK 318 100 | 300X1826 |
| SAK 320 100 | 300X2068 |

| | |
|-------------|----------|
| SAK 49 100 | 400X941 |
| SAK 411 100 | 400X1184 |
| SAK 413 100 | 400X1384 |
| SAK 416 100 | 400X1626 |
| SAK 418 100 | 400X1826 |
| SAK 420 100 | 400X2068 |



FLOOR GRID / WITH COLLECTING POT / DISCHARGE FROM ONE SIDE / NOT INCLINED

YK

DN 70 PVC (0/75 mm)

Shallow Type

| MODEL | DIMENSIONS |
|----------|------------|
| | mm |
| YK 33 70 | 300X300 |
| YK 34 70 | 300X400 |
| YK 35 70 | 300X500 |
| YK 37 70 | 300X741 |
| YK 43 70 | 400X300 |
| YK 44 70 | 400X400 |
| YK 45 70 | 400X741 |

DN 100 PVC (1/110 mm)

| MODEL | DIMENSIONS |
|-----------|------------|
| | mm |
| YK 33 100 | 300X300 |
| YK 34 100 | 300X400 |
| YK 35 100 | 300X500 |
| YK 37 100 | 300X741 |
| YK 43 100 | 400X300 |
| YK 44 100 | 400X400 |
| YK 45 100 | 400X500 |



FLOOR GRID / WITH COLLECTING POT / DISCHARGE FROM ONE SIDE / INCLINED TO ONE SIDE

YK

DN 70 PVC (0/75 mm)

Shallow Type

| MODEL | DIMENSIONS |
|-----------|------------|
| | mm |
| YK 39 70 | 300X941 |
| YK 311 70 | 300X1184 |
| YK 313 70 | 300X1384 |
| YK 316 70 | 300X1626 |
| YK 318 70 | 300X1826 |
| YK 320 70 | 300X2068 |
| YK 49 70 | 400X941 |
| YK 411 70 | 400X1184 |
| YK 413 70 | 400X1384 |
| YK 416 70 | 400X1626 |
| YK 418 70 | 400X1826 |
| YK 420 70 | 400X2068 |

DN 100 PVC (1/110 mm)

| MODEL | DIMENSIONS |
|------------|------------|
| | mm |
| YK 39 100 | 300X941 |
| YK 311 100 | 300X1184 |
| YK 313 100 | 300X1384 |
| YK 316 100 | 300X1626 |
| YK 318 100 | 300X1826 |
| YK 320 100 | 300X2068 |
| YK 49 100 | 400X941 |
| YK 411 100 | 400X1184 |
| YK 413 100 | 400X1384 |
| YK 416 100 | 400X1626 |
| YK 418 100 | 400X1826 |
| YK 420 100 | 400X2068 |



FLOOR GRID / WITH COLLECTING POT / DISCHARGE FROM ONE SIDE / INCLINED TO THE CENTER

AK

DN 70 PVC (0/75 mm)

Shallow Type

| MODEL | DIMENSIONS |
|------------|------------|
| | mm |
| SYK 39 70 | 300X941 |
| SYK 311 70 | 300X1184 |
| SYK 313 70 | 300X1384 |
| SYK 316 70 | 300X1626 |
| SYK 318 70 | 300X1826 |
| SYK 320 70 | 300X2068 |

| | |
|------------|----------|
| SYK 49 70 | 400X941 |
| SYK 411 70 | 400X1184 |
| SYK 413 70 | 400X1384 |
| SYK 416 70 | 400X1626 |
| SYK 418 70 | 400X1826 |
| SYK 420 70 | 400X2068 |

DN 100 PVC (1/110 mm)

| MODEL | DIMENSIONS |
|-------------|------------|
| | mm |
| SYK 39 100 | 300X941 |
| SYK 311 100 | 300X1184 |
| SYK 313 100 | 300X1384 |
| SYK 316 100 | 300X1626 |
| SYK 318 100 | 300X1826 |
| SYK 320 100 | 300X2068 |

| | |
|-------------|----------|
| SYK 49 100 | 400X941 |
| SYK 411 100 | 400X1184 |
| SYK 413 100 | 400X1384 |
| SYK 416 100 | 400X1626 |
| SYK 418 100 | 400X1826 |
| SYK 420 100 | 400X2068 |



YCS 100

WASTE CONTAINER

| MODEL | DIMENSIONS |
|---------|------------|
| YCS 100 | Round |



YCK 100

WASTE CONTAINER

| MODEL | DIMENSIONS |
|---------|------------|
| YCK 100 | Square |


TA MKT
OIL RETAINER

| MODEL | CAPACITY | DIMENSIONS |
|------------|--------------|-------------|
| | | mm |
| TA MKT-025 | 0,25 Lt/sec. | 630x400x490 |
| TA MKT-050 | 0,50 Lt/sec. | 730x490x490 |
| TA MKT-075 | 0,75 Lt/sec. | 780x590x490 |
| TA MKT-100 | 1,00 Lt/sec. | 910x630x490 |

Undertable / Manuel control / Solid waste sorter / Mobile

TA MKS
OIL RETAINER

| MODEL | CAPACITY | DIMENSIONS |
|------------|--------------|-------------|
| | | mm |
| TA MKS-025 | 0,25 Lt/sec. | 710x400x330 |
| TA MKS-050 | 0,50 Lt/sec. | 730x490x360 |
| TA MKS-075 | 0,75 Lt/sec. | 780x590x360 |
| TA MKS-100 | 1,00 Lt/sec. | 910x630x360 |

Undertable / Manuel control / Solid waste sorter

TA MKZ
OIL RETAINER

| MODEL | CAPACITY | DIMENSIONS |
|----------|-----------|---------------|
| | | mm |
| TA MKZ-1 | 1 Lt/sec. | 1130X580X610 |
| TA MKZ-2 | 2 Lt/sec. | 1430X680X730 |
| TA MKZ-3 | 3 Lt/sec. | 1580X780X880 |
| TA MKZ-4 | 4 Lt/sec. | 1830X830X1005 |
| TA MKZ-5 | 5 Lt/sec. | 2130X980X1060 |

Undertable / Manuel control / Solid waste sorter / Floor Type

TA MKG
OIL RETAINER

| MODEL | CAPACITY | DIMENSIONS |
|----------|-----------|----------------|
| | | mm |
| TA MKG-1 | 1 Lt/sec. | 1190X640X610 |
| TA MKG-2 | 2 Lt/sec. | 1490X740X730 |
| TA MKG-3 | 3 Lt/sec. | 1640X840X880 |
| TA MKG-4 | 4 Lt/sec. | 1890X890X1005 |
| TA MKG-5 | 5 Lt/sec. | 2190X1040X1060 |

Undertable / Manuel control / Solid waste sorter / Built-in